

## Executive Summary

- ▶ **The Lao Securities Exchange:** Irregular large sell-offs weakened the Lao Securities Market right at its verge of recovery. EDL-Gen faced the 7,350 Kip for the second time, right after its exertion to 7,700 Kip yesterday. BCEL is currently valued at 13,000 Kip per share, retreating by 2.99 percent from its previous closing price. Market turnover lurched to 4.7 billion Kip as the total volume shrank to less than 514 thousand units, equivalent to only 62% of the yesterday amount.
- ▶ **Government expects to complete stock market law this year:** Lao Securities and Securities Market Commission Office's Acting Secretary General, Ms Vattana Daralay, said last week the law drafting committee expected to have the law written by the middle of this year before submitting it to the cabinet and National Assembly for approval. The commission will also develop regulations regarding the information disclosed by listed companies, the payment system for stock trading, and the foreign investments. Rapid inflows and outflows of foreign currency make it difficult for the Bank of the Lao PDR to keep the value of the Lao kip stable – *The Vientiane Times*
- ▶ **Cooking oil producer slashes price in face of competition:** Last week, Sengsavang Food and Plastic Production Company, the nation's sole cooking-oil producer, slashed its oil price by 75,000 Kip. The price of its 18 liter batch was 325,000 Kip, and has now been reduced to 250,000 kip. Sengsavang now sells its cooking oil for 16,000 to 18,000 kip per liter in the markets; similar to that of imported brands. Sengsavang imports unfiltered cooking oil from Malaysia, Indonesia and Thailand, then filters it and packages the oil in labelled containers and bottles, which are also made by the company. The company's products are sold under the brand name 'Somboun', and first entered the market in 2000. Previously only sold in Vientiane, the oil is now marketed nationwide – *The Vientiane Times*

### Exchange Rates: 15/02/2011

	Bid	Change	Ask	Change
USD	8,035.00	1.00	8,076.00	1.00
CAD	8,011.00	-10.00	8,173.00	-11.00
THB	262.46	0.62	263.76	0.62
EUR	10,844.00	-17.00	10,899.00	-17.00
GBP	12,700.00	-13.00	12,957.00	15.00
CNY	1,169.00	0.00	1,192.00	0.00
JPY	95.08	-0.03	96.99	-0.04
VND	0.33	0.00	0.34	0.00

Exchange rates, quoted for the Lao Kip, by the Lao Development Bank

## In this issue

- Page 1 – Executive Summary
- Page 2 – The Lao Securities Exchanges
- Page 3 – Stock Boards
- Page 4 – Appendix

### Lanexang Securities Public Company

5<sup>th</sup> Floor, LSX Building,  
Ban Phonthan Neua, Saysettha District,  
Vientiane Capital, The Lao P.D.R.

Tel: (+856)-21 265 468  
Fax: (+856)-21 265 466 (Front Office)  
(+856)-21 265 465 (Back Office)  
Web: [www.lxs.com.la](http://www.lxs.com.la)  
Email: [lanexang@lxs.com.la](mailto:lanexang@lxs.com.la)  
[lxs\\_info@lxs.com.la](mailto:lxs_info@lxs.com.la)

### Contact:

Vo Ngoc Huy  
Deputy General Director  
Email: [Huy.vn@lxs.com.la](mailto:Huy.vn@lxs.com.la)  
[Huy.vn@sbsc.com.vn](mailto:Huy.vn@sbsc.com.vn)

Le Trung Hieu  
Acting Manager – Research Department  
Email: [Hieu.lt@lxs.com.la](mailto:Hieu.lt@lxs.com.la)

Issue Name	Current Price	Change (Kip)	Change (%)	52-weeks	
				High	Low
BCEL	13,000	↓ 400	2.99	15,500	8,000
EDL-Gen	7,350	↓ 350	4.55	8,850	4,550

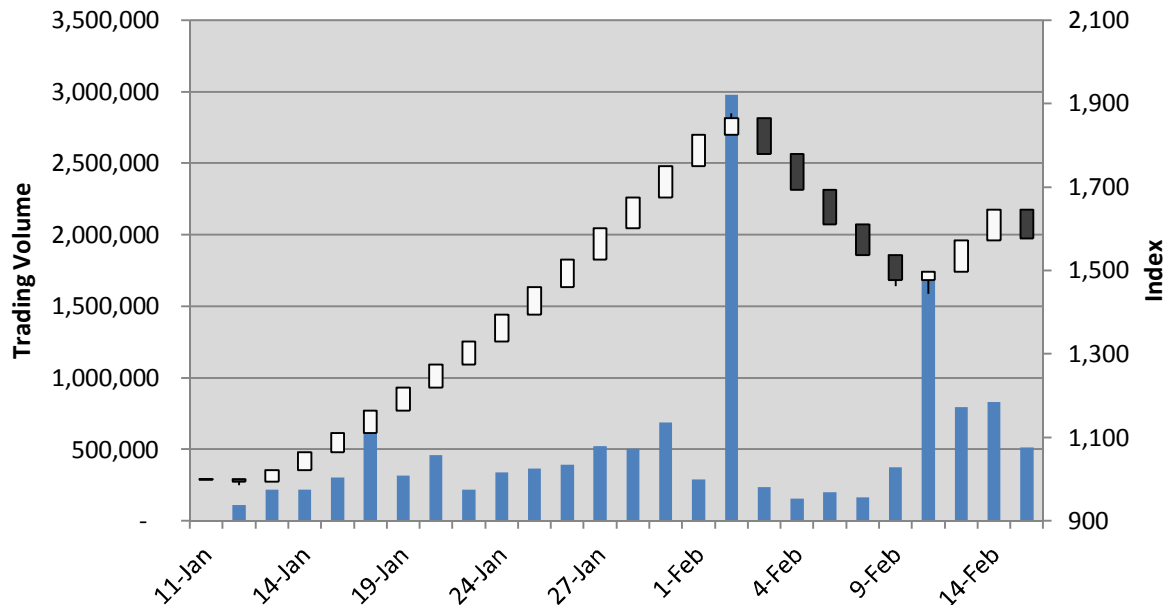
## The Lao Securities Exchange

### The Lao stock market

The Lao securities market was testing the faint-hearted investors when it made a sudden turn-around, despite the general confidence for its next bullish run. EDL-Gen stamped the last Friday mark as day traders realized their hasty gains. The 1.3 million shares of EDL-Gen sold on the 10<sup>th</sup> Feb could have made a potential profit of 11 percent if investors chose the right moment. At the same time, BCEL displayed unexpected price fluctuations. BCEL made its way to 13,700 Kip in the first session; but investors' swaying mentality got the best of it in the second session. BCEL improved its trading volume by 56.67 percent, suggesting ongoing demands for this stock.

### The LSX Index 1,576.74 ↓ 69.31 [4.21%]

The Lao Composite Index scrolled back to 1,576.74 points as price confusion threw investors off balance. The awaiting recovery could take slightly longer than planned; however the sustainably large trading volume in a bearish trend could represent the circulations of fresh capitals, which is one of the necessary factors for a healthy market recovery.



### Stock Boards

▶ Second session: 10:00 – 11:30, Closing

#### BCEL

Current		<b>13,000</b>
Volume		151,994
Previous Day Closing Price		13,400
Change	▼	<b>400</b>
Turnover		2,047,346,500

Sell Remaining Qty	11:30:00	Buy Remaining Qty
30,496	13,600	
9,600	13,500	
4,900	13,400	
50,482	13,100	
53,346	<b>13,000</b>	
Exp exe Price	12,900	2,330
	12,800	8,000
Exp exe Qty		
405,909	Total	<b>10,330</b>

Opening Price		13,700
High Price		13,700
Low Price		13,000
Price Limit	14,000	12,800

#### EDL-GEN

Current		<b>7,350</b>
Volume		361,448
Previous Day Closing Price		7,700
Change	↓	<b>350</b>
Turnover		2,656,642,800

Sell Remaining Qty	11:30:00	Buy Remaining Qty
316,153	7,700	
41,100	7,600	
43,002	7,550	
61,300	7,500	
439,923	<b>7,350</b>	
Exp exe Price		
Exp exe Qty		
1,284,984	Total	

Opening Price		7,350
High Price		7,350
Low Price		7,350
Price Limit	8,050	7,350

### Appendix

#### ▶ Market Data

#### LSX Index

Date	Current Index	Change (Kip)	Change (%)	Trading Vol. (Share)	Trading Value (Kip)	High	Low
2011/02/15	1,576.74	↓ 69.31	4.21	513,442	4,703,989,300	1,595.22	1,576.74
2011/02/14	1,646.05	↑ 74.58	4.75	830,012	6,944,083,600	1,646.05	1,646.05
2011/02/11	1,571.47	↑ 74.58	4.98	793,143	6,186,063,750	1,571.47	1,571.47
2011/02/10	1,496.89	↑ 19.43	1.32	1,717,376	13,466,962,600	1,496.89	1,442.94
2011/02/09	1,477.46	↓ 58.75	3.82	376,069	3,797,660,900	1,477.46	1,461.63

#### EDL-Gen

Date	Closing Price	Change (Kip)	Trading Vol. (Share)	Trading Value (Kip)	Market Cap. (mil. Kip)	High	Low
2011/02/15	7,350	↓ 350	361,448	2,656,642,800	6,384,188	7,350	7,350
2011/02/14	7,700	↑ 350	732,996	5,644,069,200	6,688,197	7,700	7,700
2011/02/11	7,350	↑ 350	727,737	5,348,866,950	6,384,188	7,350	7,350
2011/02/10	7,000	↑ 100	1,376,504	9,301,297,200	6,080,179	7,000	6,000
2011/02/09	6,900	↓ 350	124,988	862,417,200	5,993,320	6,900	6,900

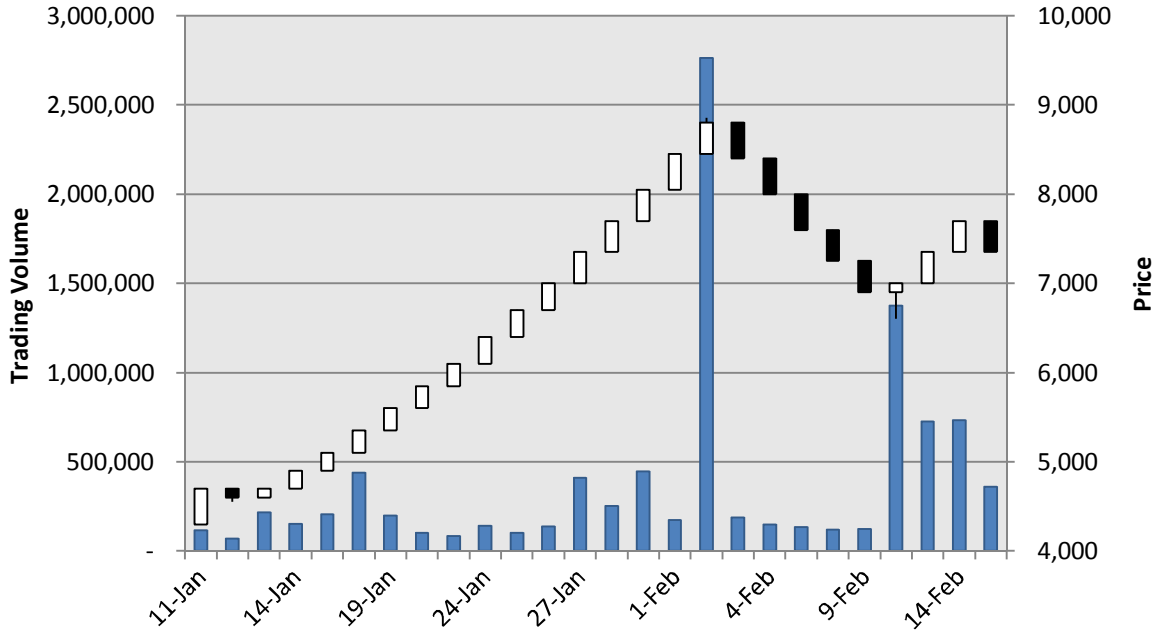
#### BCEL

Date	Closing Price	Change (Kip)	Trading Vol. (Share)	Trading Value (Kip)	Market Cap. (mil. Kip)	High	Low
2011/02/15	13,000	↓ 400	151,994	2,047,346,500	1,775,508	13,700	13,000
2011/02/14	13,400	↑ 600	97,016	1,300,014,400	1,830,140	13,400	13,400
2011/02/11	12,800	↑ 600	65,406	837,196,800	1,748,193	12,800	12,800
2011/02/10	12,200	↑ 100	340,872	4,165,665,400	1,666,247	12,700	12,200
2011/02/09	12,100	-	251,081	2,935,243,700	1,652,589	12,100	11,500

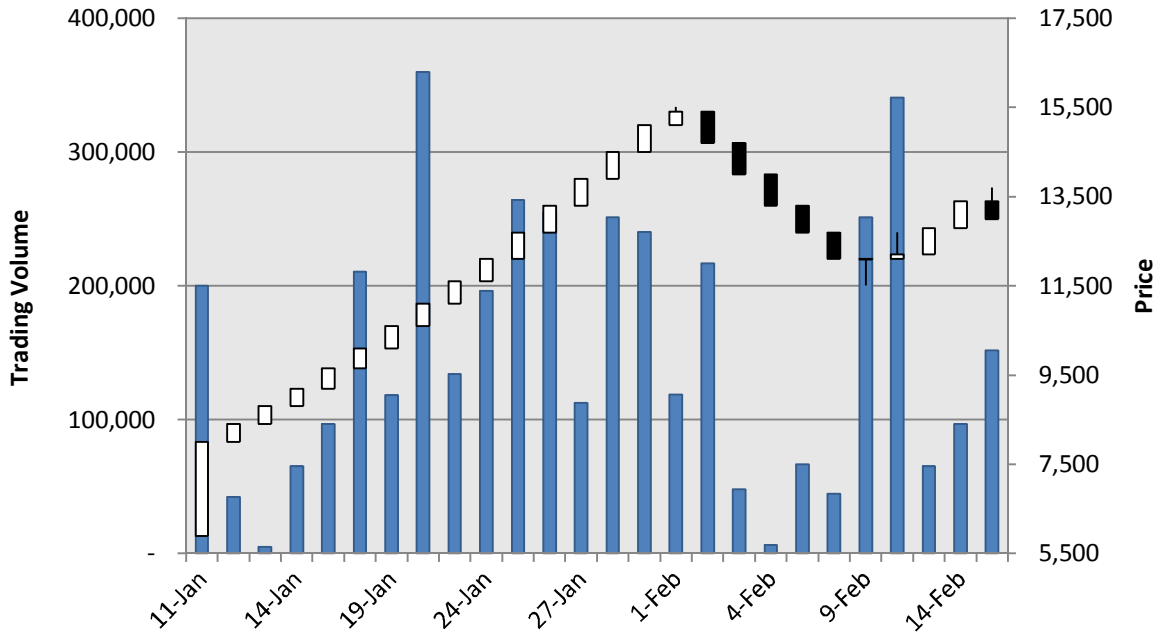
### Appendix

▶ Market Data (cont.)

#### EDL-Gen



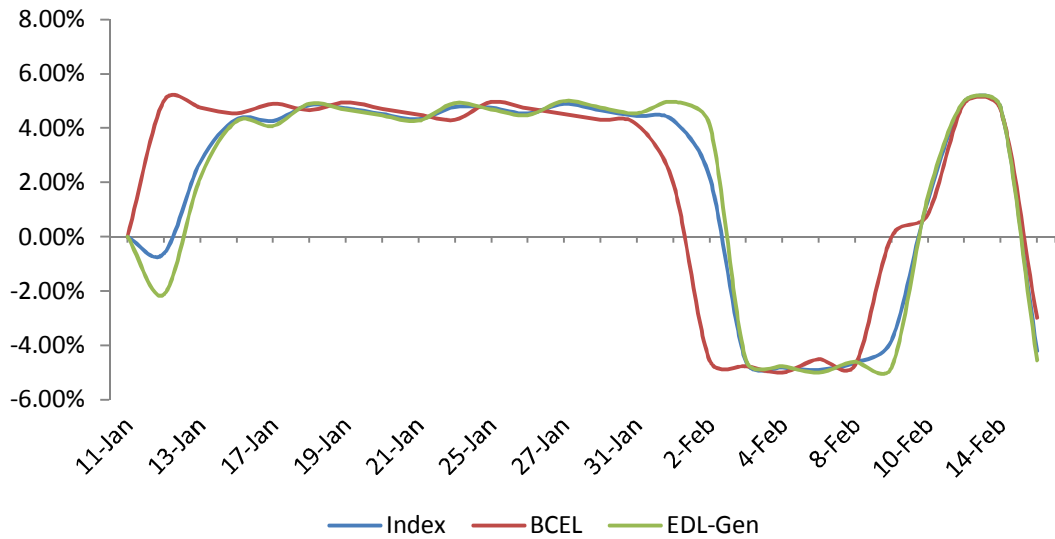
#### BCEL



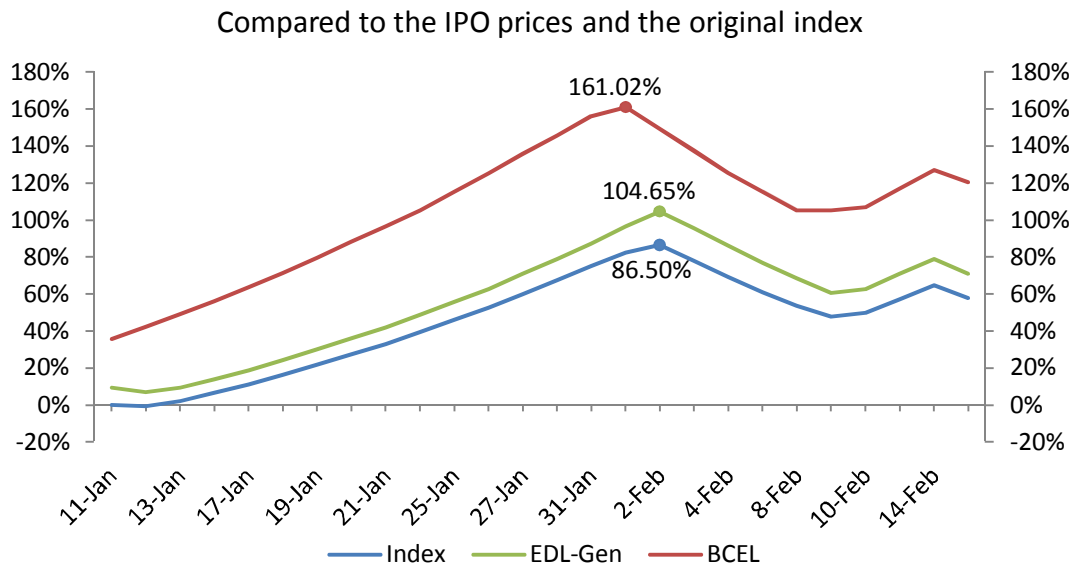
### Appendix

► Analytic Graphs

#### Daily Change (%)



#### Growth (%)



### Sacombank Securities Company

#### Head office

278 Nam Ky Khoi Nghia street, District 3

Ho Chi Minh City

Vietnam

Tel: +84 (8) 6268 6868

Fax: +84 (8) 6255 5957

www.sbsc.com.vn

#### Singapore

SBS Global Investment Pte Ltd.

No 3 Shenton Way, #24-03 Shenton House,  
Singapore 068805

Tel: +65-6592-5709

Fax: +65-6592-5700

www.sbsglobalinvest.com

#### Cambodia

Sacombank Securities (Cambodia) PLC

56 Preah Norodom Blvd  
Sangkat CheyChumneas, Khan Daun Penh,  
Cambodia

Tel: +855 23 999 890

Fax: +855 23 999 891

#### Laos

Lanexang Securities Public Company  
5th Floor, LSX Building, Ban Phonthan Neua,  
Saysettha District, Vientiane Capital,  
The Lao P.D.R.

Tel: (+856)-21 265 468

Fax: (+856)-21 265 466

Email: lanexang@lxs.com.la

www.lxs.com.la

#### Saigon Branch

63B Calmette Street

Nguyen Thai Binh Ward, District 1,

Ho Chi Minh City

Vietnam

Tel: +84 (8) 3821 4888

Fax: +84 (8) 3821 3015

#### Hanoi Branch

6<sup>th</sup>-7th Floor, 88 Ly Thuong Kiet Street

Hoan Kiem District

Hanoi

Vietnam

Tel: +84 (4) 3942 8076

Fax: +84 (8) 3942 8075

Email: hanoi@sbsc.com.vn

#### Hoa Viet Branch

36-38 Phung Hung Street

District 5

Ho Chi Minh City

Vietnam

Tel: +84 (8) 3854 7858

Fax: +84 (8) 3854 7856

#### Tay Do Branch

212A Ba Thang Hai Street, Ninh Kieu District

Can Tho City

Vietnam

Tel: +84 (710) 378 3434

Fax: +84 (710) 378 3436

#### Danang Branch

62 Nguyen Thi Minh Khai Street,

Hai Chau District, Danang City

Vietnam

Tel: +84 (5113) 81 86 86

Fax: +84 (5113) 81 88 86

#### Vungtau Branch

3rd Floor, 67A Le Hong Phong Street

Vung Tau City

Vietnam

Tel: +84 (64) 3553 398

Fax: +84 (64) 3553 390

### Disclaimers

*This document was prepared by SBS. Its subsidiaries, branches, and affiliates are also referred to as SBS. The information and statements contained herein, including any expression of opinion, are based upon sources believed to be reliable, however no representation or warranty, either expressed or implied, is provided in relation to their accuracy, completeness or reliability. Expressions of opinion herein were arrived from careful considerations, which were based upon the best information known to us; and our opinion are believed to be fair and reasonable in the circumstances prevailing at the time. Any opinion expressed herein is subject to change without notice and may be different or contrary to opinions expressed by other business sectors as a result of using different assumptions and criteria. This document is distributed solely for information purpose and should not be construed as an offer or solicitation to buy or sell any securities or related financial instruments. Any analysis in this document is based on numerous assumptions, and past performance is not necessarily indicative of future results. SBS hereby does not promise that investors will obtain profits, nor will it share with investors any profits or liabilities for any investment activity taken by investors with regards to the contents presented herein. The use of any information, statements forecasts and projections contained herein will be at the sole discretion and risk of the users. The responsible analyst(s) of this report may interact with trading desk personnel, and sales personnel for the purpose of synthesizing and interpreting market data. SBS has in place necessary policies, procedures, and physical information barriers to control the flow of nonpublic materials from one area, division into another. SBS ensures confidential information will not be publicly disclosed without proper procedures, authorization. SBS and/or its officers, directors and employees may have a position in any security mentioned herein and may also perform or seek to perform investment banking services for these companies. No person is authorized to give any information or to make any representation not contained in this document. Any information or representation not contained in this document must not be relied upon as having been authorized by or on behalf of SBS.*