

## Executive Summary

- ▶ **The Lao Securities Exchange:** Both BCEL and EDL-Gen continued to surf the strong current as new capitals channeled toward the Lao securities market. BCEL weaved another gain of 4.69 percent, netting 13,400 Kip per share by the end of the day. At the same time, EDL-Gen advanced onward for another 350 Kip and closed at 7,700 Kip per share. A total of 830 thousand shares were exchanged for a turnover of 6.95 billion Kip, which is 12.25% higher than last Friday.
- ▶ **New decree aims to control rising prices:** Rising costs in Laos have forced the government to issue a decree controlling sales prices for selected products and services in a bid to protect consumers. Under the decree, unfair practices, such as failing to disclose prices, giving deceitful pricing, withholding products from market sales without any good reasons, and setting prices without informing the price management authorities, etc., will be penalized from 500,000 Kip to 5 million Kip per violation per product. Ministry of Commerce and Industry's Domestic Trade Department Deputy Director General Bounthien Keosipha said about 15 products, including fuel, rice, and cement, will be registered as controlled goods. Vendors of controlled products must ask permission of authorities before increasing or decreasing prices – *The Vientiane Times*
- ▶ **Rising fuel costs put pressure on cement, steel prices:** Construction material producers are absorbing the higher transport costs after the government announced the third increase in fuel prices this year. "Cement prices have not gone up even though we're having to pay increased transport costs," the Cement Producers' Group Secretary Mr Inpone Phathananoulack said yesterday. The group now pays 95,000 kip per tonne instead of 85,000 kip for transport from Vangvieng district in Vientiane province to the capita. The current price of 'green' brand cement is 680,000 to 710,000 kip per tonne and 750,000 to 780,000 kip per tonne for 'red' brand cement. The group has been selling at these prices since May last year. However, some steel producers have adjusted their prices upwards to compensate for the high price of fuel – *The Vientiane Times*

#### Exchange Rates: 14/02/2011

	Bid	Change	Ask	Change
USD	8,034.00	2.00	8,075.00	4.00
CAD	8,021.00	69.00	8,184.00	71.00
THB	261.84	0.21	263.14	0.21
EUR	10,861.00	-74.00	10,916.00	-74.00
GBP	12,713.00	-27.00	12,942.00	-57.00
CNY	1,169.00	0.00	1,192.00	0.00
JPY	95.11	0.00	97.03	0.00
VND	0.33	0.00	0.34	0.00

Exchange rates, quoted for the Lao Kip, by the Lao Development Bank

## In this issue

- Page 1 – Executive Summary
- Page 2 – The Lao Securities Exchanges
- Page 3 – Stock Boards
- Page 4 – Appendix

### Lanexang Securities Public Company

5<sup>th</sup> Floor, LSX Building,  
Ban Phonthan Neua, Saysettha District,  
Vientiane Capital, The Lao P.D.R.

Tel: (+856)-21 265 468  
Fax: (+856)-21 265 466 (Front Office)  
(+856)-21 265 465 (Back Office)  
Web: [www.lxs.com.la](http://www.lxs.com.la)  
Email: [lanexang@lxs.com.la](mailto:lanexang@lxs.com.la)  
[lxs\\_info@lxs.com.la](mailto:lxs_info@lxs.com.la)

### Contact:

Vo Ngoc Huy  
Deputy General Director  
Email: [Huy.vn@lxs.com.la](mailto:Huy.vn@lxs.com.la)  
[Huy.vn@sbsc.com.vn](mailto:Huy.vn@sbsc.com.vn)

Le Trung Hieu  
Acting Manager – Research Department  
Email: [Hieu.lt@lxs.com.la](mailto:Hieu.lt@lxs.com.la)

Issue Name	Current Price	Change (Kip)	Change (%)	52-weeks	
				High	Low
BCEL	13,400	↑ 600	4.69	15,500	8,000
EDL-Gen	7,700	↑ 350	4.76	8,850	4,550

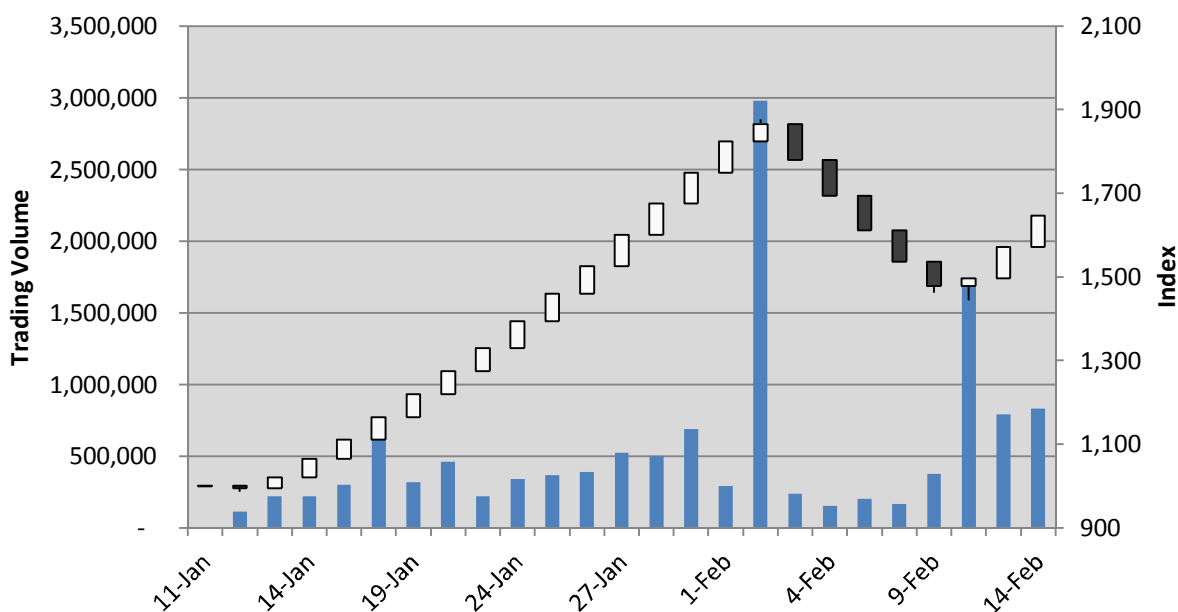
## The Lao Securities Exchange

### The Lao stock market

EDL-Gen has been upholding tremendous demands over the last three trading days, which amount to roughly 2.8 shares. This number reminds us of the 2<sup>nd</sup> February, when 2.7 million shares of EDL-Gen were traded at 8,850 Kip per share. Small investors were probably trying to cut losses by selling their EDL-Gen at a lower price, explaining the recently abnormal supplies of this stock. On the contrary, BCEL quietly trended upward with only 97 thousand shares. Perhaps, BCEL's investors are getting back to their comfort zone, reluctant to give up their shares.

### The LSX Index 1,646.05 ↑ 74.58 [4.75%]

The upper side of the graph started to become more visible as the Lao index had its third recovery injection. The LSX index propelled forward to 1,646.05 points without much resistance, signifying a 4.75 percent gain. The benchmark has climbed an impressive 12% from its recent bottom only within three active days, suggesting strong supports and confidence for the Lao securities market.



### Stock Boards

▶ Second session: 10:00 – 11:30, Closing

#### BCEL

Current		<b>13,400</b>
Volume		97,016
Previous Day Closing Price		12,800
Change	↑	600
Turnover		1,300,014,400

Sell Remaining Qty	11:30:00	Buy Remaining Qty
Exp exe Price	<b>13,400</b>	238,080
	13,300	6,626
Exp exe Qty	12,800	11,609
	<b>Total</b>	<b>256,315</b>

Opening Price		13,400
High Price		13,400
Low Price		13,400
Price Limit	13,400	12,200

#### EDL-GEN

Current		<b>7,700</b>
Volume		732,996
Previous Day Closing Price		7,350
Change	↑	350
Turnover		5,644,069,200

Sell Remaining Qty	11:30:00	Buy Remaining Qty
Exp exe Price	<b>7,700</b>	15,581
	7,600	500
Exp exe Qty	7,500	4,600
	7,450	4,555
	7,400	30,488
	<b>Total</b>	<b>77,794</b>

Opening Price		7,700
High Price		7,700
Low Price		7,700
Price Limit	7,700	7,000

### Appendix

#### ▶ Market Data

#### LSX Index

Date	Current Index	Change (Kip)	Change (%)	Trading Vol. (Share)	Trading Value (Kip)	High	Low
2011/02/14	1,646.05	↑ 74.58	4.75	830,012	6,944,083,600	1,646.05	1,646.05
2011/02/11	1,571.47	↑ 74.58	4.98	793,143	6,186,063,750	1,571.47	1,571.47
2011/02/10	1,496.89	↑ 19.43	1.32	1,717,376	13,466,962,600	1,496.89	1,442.94
2011/02/09	1,477.46	↓ 58.75	3.82	376,069	3,797,660,900	1,477.46	1,461.63
2011/02/08	1,536.21	↓ 74.58	4.63	165,547	1,417,961,350	1,536.21	1,536.21

#### EDL-Gen

Date	Closing Price	Change (Kip)	Trading Vol. (Share)	Trading Value (Kip)	Market Cap. (mil. Kip)	High	Low
2011/02/14	7,700	↑ 350	732,996	5,644,069,200	6,688,197	7,700	7,700
2011/02/11	7,350	↑ 350	727,737	5,348,866,950	6,384,188	7,350	7,350
2011/02/10	7,000	↑ 100	1,376,504	9,301,297,200	6,080,179	7,000	6,000
2011/02/09	6,900	↓ 350	124,988	862,417,200	5,993,320	6,900	6,900
2011/02/08	7,250	↓ 350	120,651	874,719,750	6,297,329	7,250	7,250

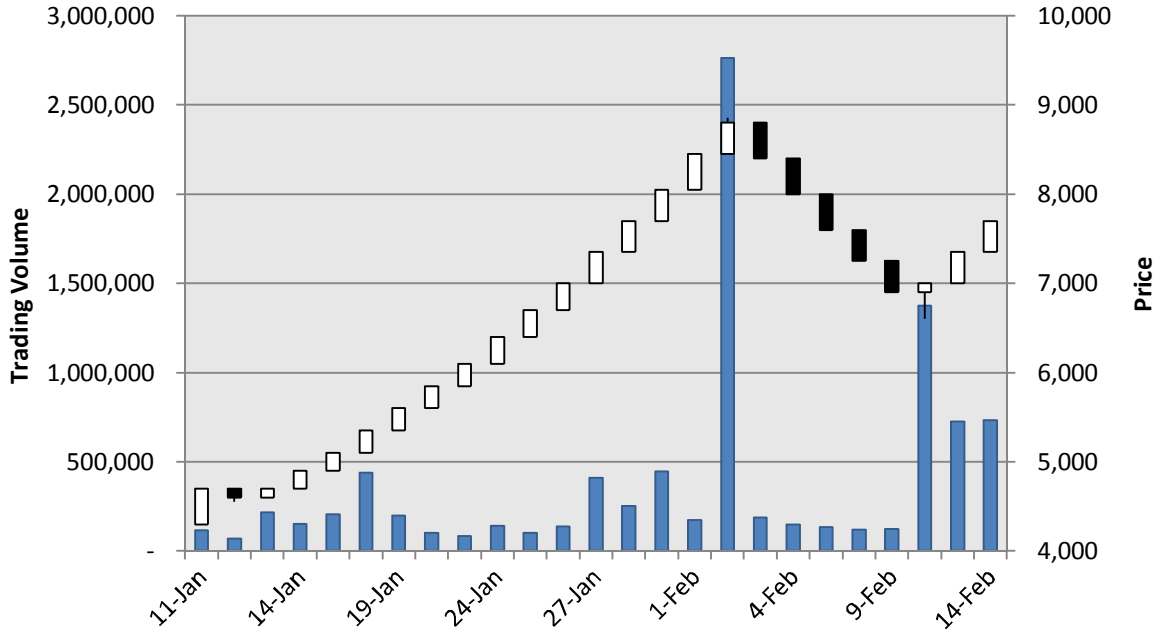
#### BCEL

Date	Closing Price	Change (Kip)	Trading Vol. (Share)	Trading Value (Kip)	Market Cap. (mil. Kip)	High	Low
2011/02/12	13,400	↑ 600	97,016	1,300,014,400	1,830,140	13,400	13,400
2011/02/11	12,800	↑ 600	65,406	837,196,800	1,748,193	12,800	12,800
2011/02/10	12,200	↑ 100	340,872	4,165,665,400	1,666,247	12,700	12,200
2011/02/09	12,100	-	251,081	2,935,243,700	1,652,589	12,100	11,500
2011/02/08	12,100	↓ 600	44,896	543,241,600	1,652,589	12,100	12,100

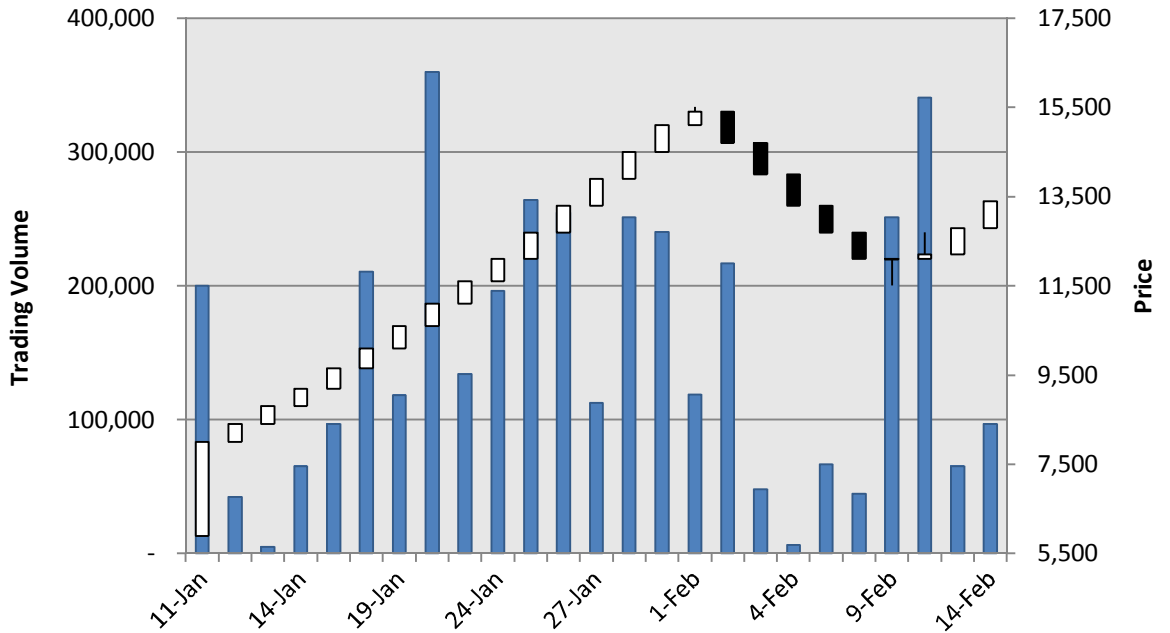
### Appendix

▶ Market Data (cont.)

#### EDL-Gen



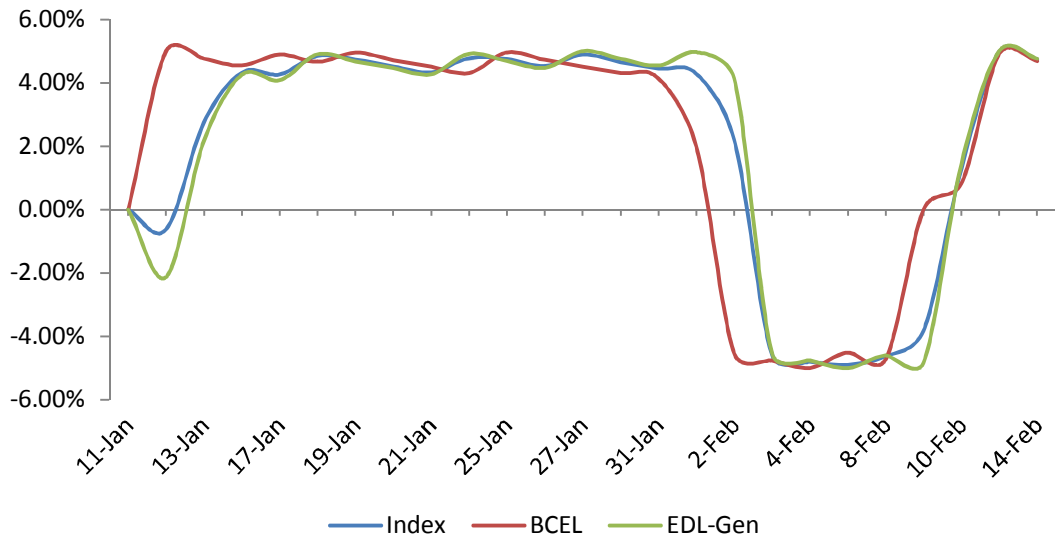
#### BCEL



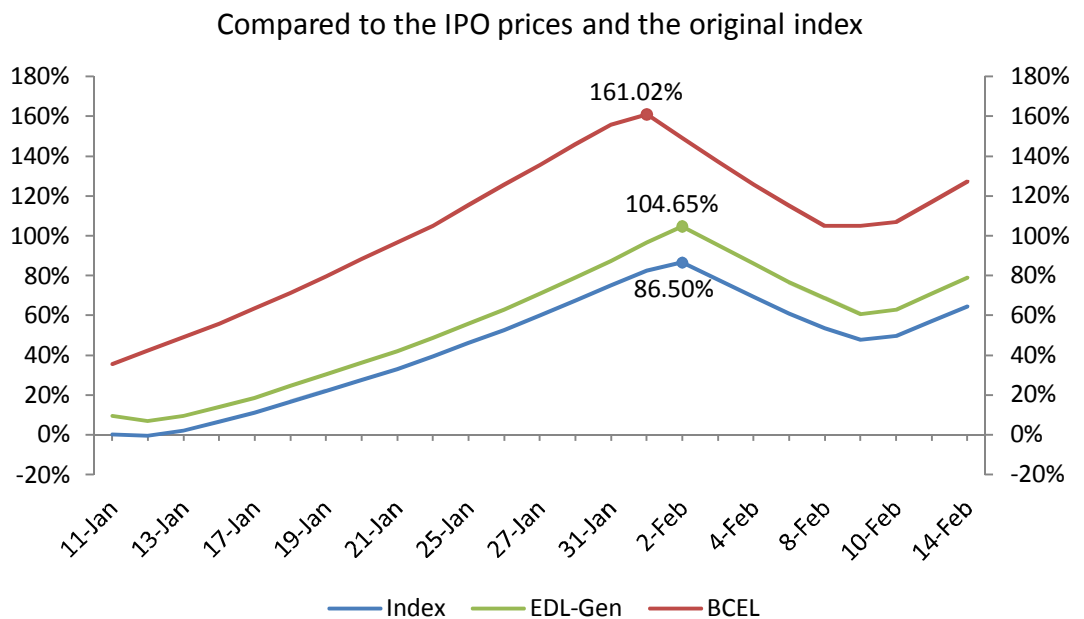
### Appendix

► Analytic Graphs

#### Daily Change (%)



#### Growth (%)



### Sacombank Securities Company

#### Head office

278 Nam Ky Khoi Nghia street, District 3

Ho Chi Minh City

Vietnam

Tel: +84 (8) 6268 6868

Fax: +84 (8) 6255 5957

www.sbsc.com.vn

#### Singapore

SBS Global Investment Pte Ltd.

No 3 Shenton Way, #24-03 Shenton House,  
Singapore 068805

Tel: +65-6592-5709

Fax: +65-6592-5700

www.sbsglobalinvest.com

#### Cambodia

Sacombank Securities (Cambodia) PLC

56 Preah Norodom Blvd  
Sangkat CheyChumneas, Khan Daun Penh,  
Cambodia

Tel: +855 23 999 890

Fax: +855 23 999 891

#### Laos

Lanexang Securities Public Company  
5th Floor, LSX Building, Ban Phonthan Neua,  
Saysettha District, Vientiane Capital,  
The Lao P.D.R.

Tel: (+856)-21 265 468

Fax: (+856)-21 265 466

Email: lanexang@lxs.com.la

www.lxs.com.la

#### Saigon Branch

63B Calmette Street

Nguyen Thai Binh Ward, District 1,

Ho Chi Minh City

Vietnam

Tel: +84 (8) 3821 4888

Fax: +84 (8) 3821 3015

#### Hanoi Branch

6<sup>th</sup>-7<sup>th</sup> Floor, 88 Ly Thuong Kiet Street

Hoan Kiem District

Hanoi

Vietnam

Tel: +84 (4) 3942 8076

Fax: +84 (8) 3942 8075

Email: hanoi@sbsc.com.vn

#### Hoa Viet Branch

36-38 Phung Hung Street

District 5

Ho Chi Minh City

Vietnam

Tel: +84 (8) 3854 7858

Fax: +84 (8) 3854 7856

#### Tay Do Branch

212A Ba Thang Hai Street, Ninh Kieu District

Can Tho City

Vietnam

Tel: +84 (710) 378 3434

Fax: +84 (710) 378 3436

#### Danang Branch

62 Nguyen Thi Minh Khai Street,

Hai Chau District, Danang City

Vietnam

Tel: +84 (5113) 81 86 86

Fax: +84 (5113) 81 88 86

#### Vungtau Branch

3rd Floor, 67A Le Hong Phong Street

Vung Tau City

Vietnam

Tel: +84 (64) 3553 398

Fax: +84 (64) 3553 390

### Disclaimers

*This document was prepared by SBS. Its subsidiaries, branches, and affiliates are also referred to as SBS. The information and statements contained herein, including any expression of opinion, are based upon sources believed to be reliable, however no representation or warranty, either expressed or implied, is provided in relation to their accuracy, completeness or reliability. Expressions of opinion herein were arrived from careful considerations, which were based upon the best information known to us; and our opinion are believed to be fair and reasonable in the circumstances prevailing at the time. Any opinion expressed herein is subject to change without notice and may be different or contrary to opinions expressed by other business sectors as a result of using different assumptions and criteria. This document is distributed solely for information purpose and should not be construed as an offer or solicitation to buy or sell any securities or related financial instruments. Any analysis in this document is based on numerous assumptions, and past performance is not necessarily indicative of future results. SBS hereby does not promise that investors will obtain profits, nor will it share with investors any profits or liabilities for any investment activity taken by investors with regards to the contents presented herein. The use of any information, statements forecasts and projections contained herein will be at the sole discretion and risk of the users. The responsible analyst(s) of this report may interact with trading desk personnel, and sales personnel for the purpose of synthesizing and interpreting market data. SBS has in place necessary policies, procedures, and physical information barriers to control the flow of nonpublic materials from one area, division into another. SBS ensures confidential information will not be publicly disclosed without proper procedures, authorization. SBS and/or its officers, directors and employees may have a position in any security mentioned herein and may also perform or seek to perform investment banking services for these companies. No person is authorized to give any information or to make any representation not contained in this document. Any information or representation not contained in this document must not be relied upon as having been authorized by or on behalf of SBS.*