

## Executive Summary

- ▶ **The Lao Securities Exchange:** The Lao stock market has possibly reached a turning point today when both stocks have sprung free from the bottom. BCEL was able to even touch the ceiling price at one point, but it could not maintain the thrust and fell to 12,200 Kip per share, gaining 0.83% compared to yesterday. EDL-Gen gathered enough strength in the first session to push through its base price in the second, restoring the 7,200 Kip per share, which is equivalent to a 1.45 percent upswing. The total trading volume experienced some spiking sessions today when it surged almost 4 times the yesterday amount, resulting in an impressive market turnover of 13.4 billion Kip.
- ▶ **Agriculture Promotion Bank will not be ready to become public company despite governmental encouragement:** The bank needs a long term development strategy to be listed on the stock market. Moreover, another major problem is the ability to demonstrate transparent operations. The bank has signed an MOU with a Chinese company to establish a joint-venture securities company. In 2010, the bank generated revenues of more 300 billion kip while its expenditure was about 262 billion kip. The bank plans to make a net profit of about 45 billion kip this year. The bank's credit reached 1,661 billion kip in 2010, and is expected to reach 2,014 billion kip this year. Non-performing loans amounted to 3.27% of the total loans – *The Vientiane Times*
- ▶ **More loans to boost food production:** The government has agreed in principle to provide loans for agricultural producers, so they can supply food for laborers working on the Laos-China railway, according to a senior official. There will be about 30,000 to 50,000 laborers working on the railway so the demand for food in Laos will increase. The Lao Agriculture Processing Association was discussing plans to increase production capacity while trying to obtain a low interest loan from the government. Lao businesses expect to supply about 20 to 30 percent of total food requirements over the first year, and will step up supply in the following years. The food prices in Laos surged about 8% in December compared to the same period last year. The government last year provided low interest loans for agricultural processing groups in the wake of animal disease outbreaks to help them get back on their feet – *The Vientiane Times*

### Exchange Rates: 10/02/2011

	Bid	Change	Ask	Change
USD	8,032.00	-1.00	8,071.00	-1.00
CAD	7,951.00	-6.00	8,111.00	-7.00
THB	262.20	-0.39	263.5	-0.39
EUR	11,014.00	64.00	11,070.00	64.00
GBP	12,731.00	17.00	12,987.00	15.00
CNY	1,169.00	0.00	1,192.00	0.00
JPY	95.99	-0.11	97.93	-0.12
VND	0.33	0.00	0.34	0.00

Exchange rates, quoted for the Lao Kip, by the Lao Development Bank

## In this issue

- Page 1 – Executive Summary
- Page 2 – The Lao Securities Exchanges
- Page 3 – Stock Boards
- Page 4 – Appendix

### Lanexang Securities Public Company

5<sup>th</sup> Floor, LSX Building,  
Ban Phonthan Neua, Saysettha District,  
Vientiane Capital, The Lao P.D.R.

Tel: (+856)-21 265 468  
 Fax: (+856)-21 265 466 (Front Office)  
 (+856)-21 265 465 (Back Office)  
 Web: [www.lxs.com.la](http://www.lxs.com.la)  
 Email: [lanexang@lxs.com.la](mailto:lanexang@lxs.com.la)  
[lxs\\_info@lxs.com.la](mailto:lxs_info@lxs.com.la)

### Contact:

Vo Ngoc Huy  
 Deputy General Director  
 Email: [Huy.vn@lxs.com.la](mailto:Huy.vn@lxs.com.la)  
[Huy.vn@sbsc.com.vn](mailto:Huy.vn@sbsc.com.vn)

Le Trung Hieu  
 Analyst – Research Department  
 Email: [Hieu.lt@lxs.com.la](mailto:Hieu.lt@lxs.com.la)

Issue Name	Current Price	Change (Kip)	Change (%)	52-weeks	
				High	Low
BCEL	12,200	↑ 100	0.83	15,500	8,000
EDL-Gen	7,00	↑ 100	1.45	8,850	4,550

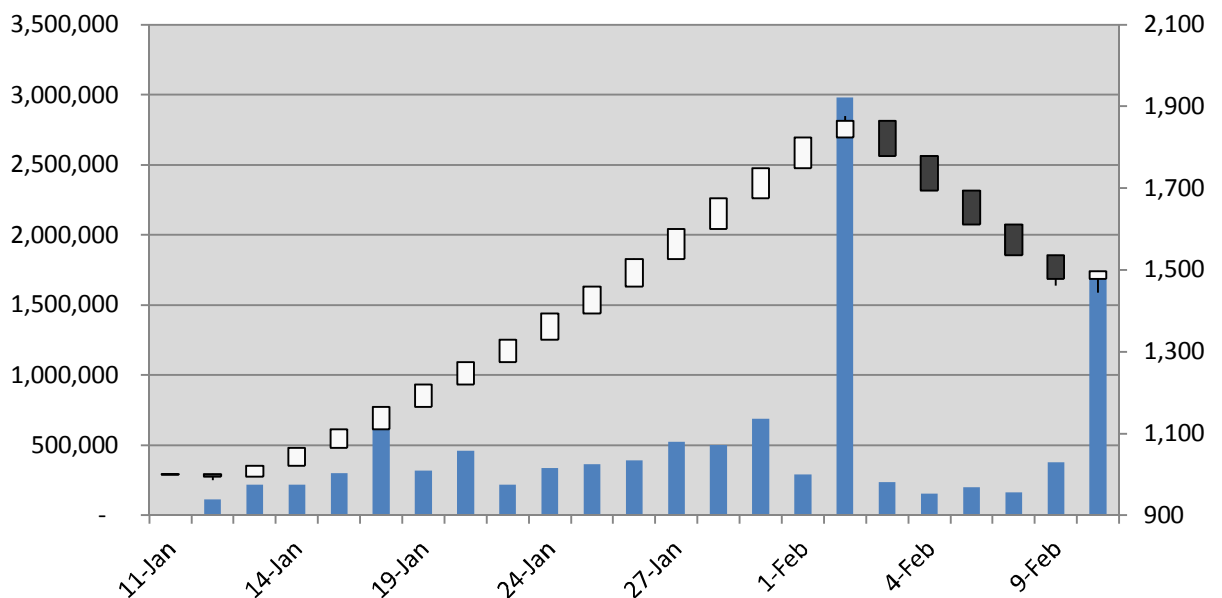
## The Lao Securities Exchange

### The Lao stock market

BCEL has not fully overcome its own weight; it could not grab on to the ceiling price after the first session, and dropped back down to almost where it started today. However, the trading volume of this stock surged by 36%, suggesting increasingly opposite reactions from investors: one tried to realize their diminishing capital gains, while the other tried to purchase the shares as they come down to a more affordable level. EDL-Gen experienced a similar situation to that of BCEL yesterday, when an unusually large selling wave flushed away a significant portion of the bidding orders. Even though both securities share the same symptom, EDL-Gen has been somewhat demonstrating more resilient movements than BCEL.

### The LSX Index 1,496.89 ↑ 19.43 [1.32%]

Many spectators seemed to enjoy the today show when the LSX benchmark green up its index after five consecutive downturns. In the first session, the index persisted its bearish run to 1,442.94 points as EDL continue to struggle; however, it reclaimed 54 points in the second session and closed at 1,496.89 points.



### Stock Boards

▶ First session: 8:30 – 10:00

#### BCEL

Current		<b>12,700</b>
Volume		14,054
Previous Day Closing Price		12,100
Change	↑	600
Turnover		178,485,800

Sell Remaining Qty	10:13:27	Buy Remaining Qty
Exp exe Price	<b>12,700</b>	101,883
	12,600	13,652
Exp exe Qty	<b>12,200</b>	1,830
	12,000	1,130
	11,800	2,035
	<b>Total</b>	<b>123,330</b>

Opening Price		12,700
High Price		12,700
Low Price		12,700
Price Limit	12,700	11,500

#### EDL-GEN

Current		<b>6,600</b>
Volume		835,577
Previous Day Closing Price		6,900
Change	↓	300
Turnover		5,514,808,200

Sell Remaining Qty	10:18:24	Buy Remaining Qty
1,000	7,200	
2,000	7,150	
10,300	7,000	
58,500	6,900	
900	6,800	
Exp exe Price	<b>6,600</b>	376,956
6,600		
Exp exe Qty		
256,957		
<b>329,657</b>	<b>Total</b>	<b>633,913</b>

Opening Price		6,600
High Price		6,600
Low Price		6,600
Price Limit	7,200	6,600

### Stock Boards

▶ Second session: 10:00 – 11:30, Closing

#### BCEL

Current		<b>12,200</b>
Volume		340,872
Previous Day Closing Price		12,100
Change	▲	100
Turnover		4,165,665,400

Sell Remaining Qty	11:30:00	Buy Remaining Qty
1,635	12,700	
100	12,600	
Exp exe Price	<b>12,200</b>	6,624
	12,000	130
Exp exe Qty	<b>11,800</b>	2,049
	11,500	2,800
<b>1,735</b>	<b>Total</b>	<b>11,603</b>

Opening Price		12,700
High Price		12,700
Low Price		12,200
Price Limit	12,700	11,500

#### EDL-GEN

Current		<b>7,000</b>
Volume		1,376,504
Previous Day Closing Price		6,900
Change	▲	100
Turnover		9,301,297,200

Sell Remaining Qty	11:30:00	Buy Remaining Qty
51,276	7,200	
2,000	7,150	
Exp exe Price	<b>7,000</b>	58,873
	6,900	547,112
Exp exe Qty	<b>6,800</b>	24,220
	6,700	16,924
	6,650	7,900
<b>53,276</b>	<b>Total</b>	<b>1,340,683</b>

Opening Price		6,600
High Price		7,000
Low Price		6,600
Price Limit	7,200	6,600

### Appendix

#### ▶ Market Data

#### LSX Index

Date	Current Index	Change (Kip)	Change (%)	Trading Vol. (Share)	Trading Value (Kip)	High	Low
2011/02/10	1,496.89	↑ 19.43	1.32	1,717,376	13,466,962,600	1,496.89	1,442.94
2011/02/09	1,477.46	↓ 58.75	3.82	376,069	3,797,660,900	1,477.46	1,461.63
2011/02/08	1,536.21	↓ 74.58	4.63	165,547	1,417,961,350	1,536.21	1,536.21
2011/02/07	1,610.79	↓ 82.97	4.90	200,816	1,865,407,700	1,610.79	1,610.79
2011/02/04	1,693.76	↓ 85.61	4.81	153,667	1,262,625,300	1,693.76	1,693.76

#### EDL-Gen

Date	Closing Price	Change (Kip)	Trading Vol. (Share)	Trading Value (Kip)	Market Cap. (mil. Kip)	High	Low
2011/02/10	7,000	↑ 100	1,376,504	9,301,297,200	6,080,179	7,000	6,000
2011/02/09	6,900	↓ 350	124,988	862,417,200	5,993,320	6,900	6,900
2011/02/08	7,250	↓ 350	120,651	874,719,750	6,297,329	7,250	7,250
2011/02/07	7,600	↓ 400	134,305	1,020,718,000	6,601,338	7,600	7,600
2011/02/04	8,000	↓ 400	147,386	1,179,088,000	6,948,776	8,000	8,000

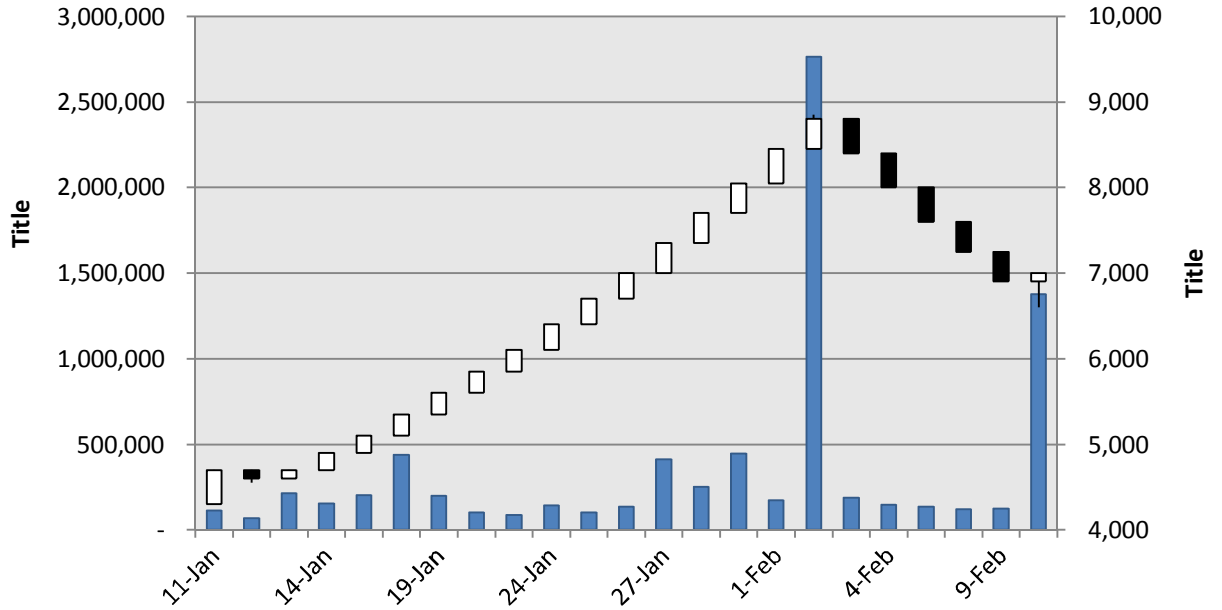
#### BCEL

Date	Closing Price	Change (Kip)	Trading Vol. (Share)	Trading Value (Kip)	Market Cap. (mil. Kip)	High	Low
2011/02/10	12,200	↑ 100	340,872	4,165,665,400	1,666,247	12,700	12,200
2011/02/09	12,100	-	251,081	2,935,243,700	1,652,589	12,100	11,500
2011/02/08	12,100	↓ 600	44,896	543,241,600	1,652,589	12,100	12,100
2011/02/07	12,700	↓ 600	66,511	844,689,700	1,734,536	12,700	12,700
2011/02/04	13,300	↓ 700	6,281	83,537,300	1,816,482	13,300	13,300

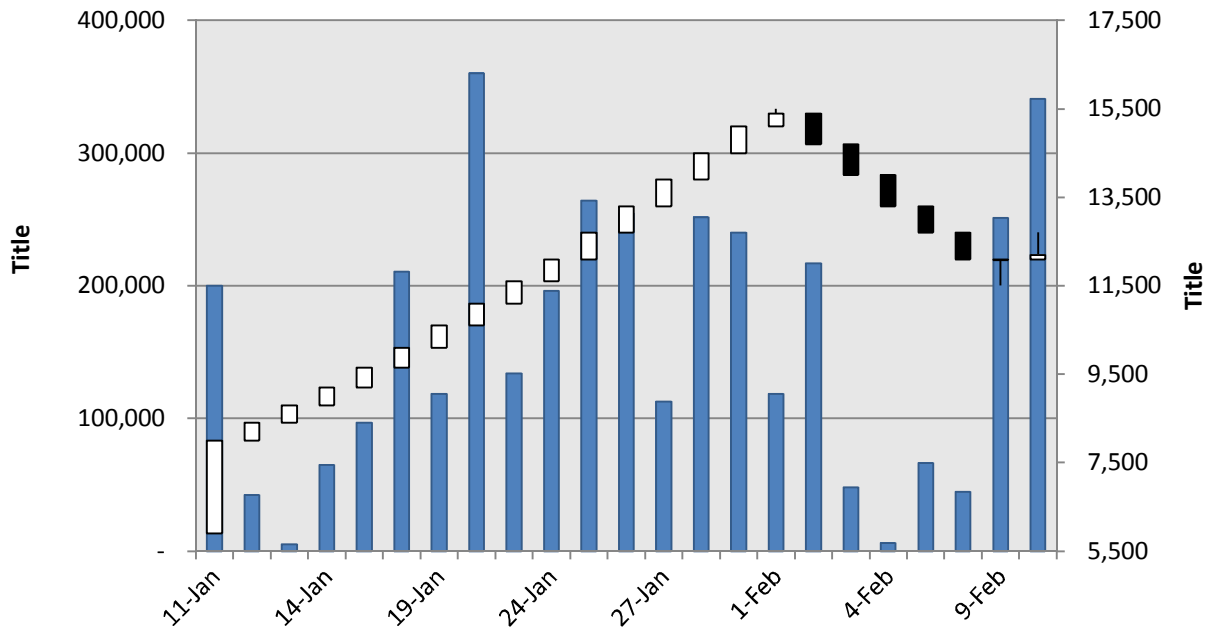
### Appendix

▶ Market Data (cont.)

#### EDL-Gen



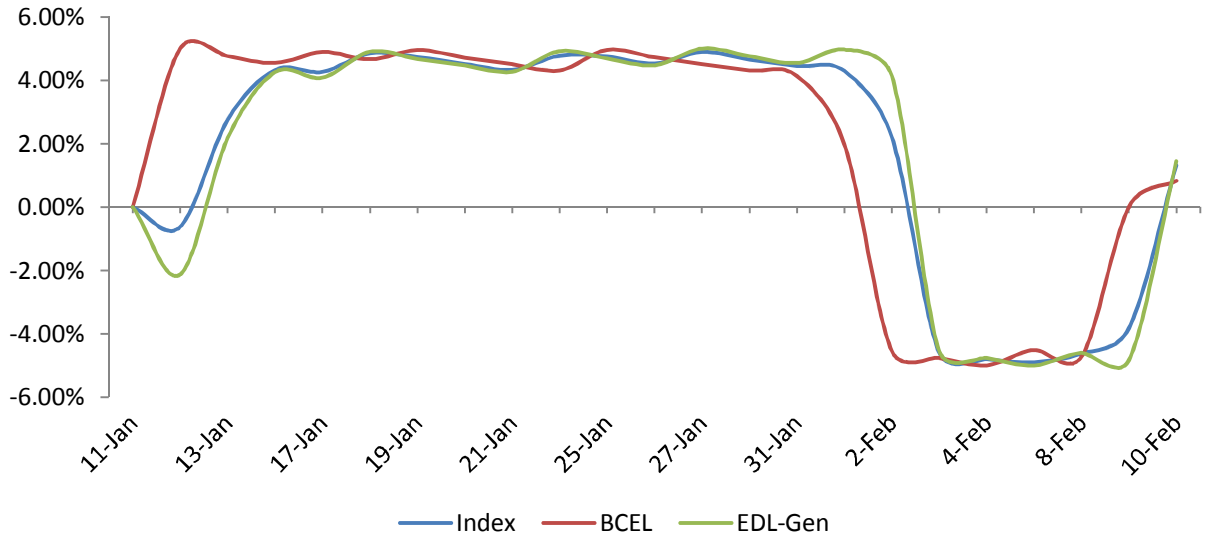
#### BCEL



### Appendix

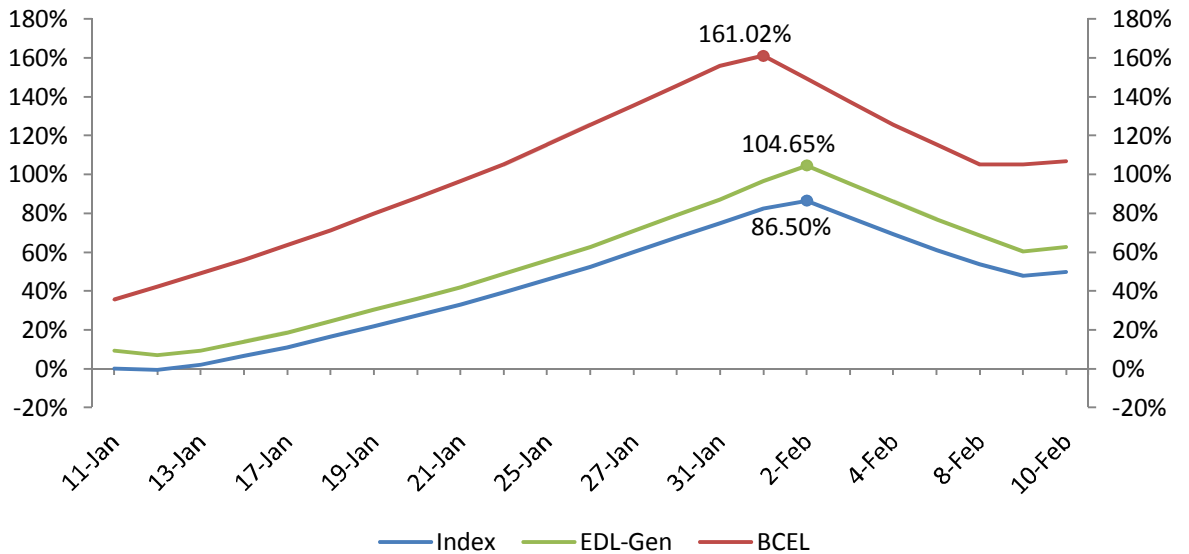
► Analytic Graphs

#### Daily Change (%)



#### Growth (%)

Compared to the IPO prices and the original index



### Sacombank Securities Company

#### Head office

278 Nam Ky Khoi Nghia street, District 3

Ho Chi Minh City

Vietnam

Tel: +84 (8) 6268 6868

Fax: +84 (8) 6255 5957

www.sbsc.com.vn

#### Singapore

SBS Global Investment Pte Ltd.

No 3 Shenton Way, #24-03 Shenton House,  
Singapore 068805

Tel: +65-6592-5709

Fax: +65-6592-5700

www.sbsglobalinvest.com

#### Cambodia

Sacombank Securities (Cambodia) PLC

56 Preah Norodom Blvd  
Sangkat CheyChumneas, Khan Daun Penh,  
Cambodia

Tel: +855 23 999 890

Fax: +855 23 999 891

#### Laos

Lanexang Securities Public Company  
5th Floor, LSX Building, Ban Phonthan Neua,  
Saysettha District, Vientiane Capital,  
The Lao P.D.R.

Tel: (+856)-21 265 468

Fax: (+856)-21 265 466

Email: lanexang@lxs.com.la

www.lxs.com.la

#### Saigon Branch

63B Calmette Street

Nguyen Thai Binh Ward, District 1,

Ho Chi Minh City

Vietnam

Tel: +84 (8) 3821 4888

Fax: +84 (8) 3821 3015

#### Hanoi Branch

6<sup>th</sup>-7th Floor, 88 Ly Thuong Kiet Street

Hoan Kiem District

Hanoi

Vietnam

Tel: +84 (4) 3942 8076

Fax: +84 (8) 3942 8075

Email: hanoi@sbsc.com.vn

#### Hoa Viet Branch

36-38 Phung Hung Street

District 5

Ho Chi Minh City

Vietnam

Tel: +84 (8) 3854 7858

Fax: +84 (8) 3854 7856

#### Tay Do Branch

212A Ba Thang Hai Street, Ninh Kieu District

Can Tho City

Vietnam

Tel: +84 (710) 378 3434

Fax: +84 (710) 378 3436

#### Danang Branch

62 Nguyen Thi Minh Khai Street,

Hai Chau District, Danang City

Vietnam

Tel: +84 (5113) 81 86 86

Fax: +84 (5113) 81 88 86

#### Vungtau Branch

3rd Floor, 67A Le Hong Phong Street

Vung Tau City

Vietnam

Tel: +84 (64) 3553 398

Fax: +84 (64) 3553 390



### Disclaimers

*This document was prepared by SBS. Its subsidiaries, branches, and affiliates are also referred to as SBS. The information and statements contained herein, including any expression of opinion, are based upon sources believed to be reliable, however no representation or warranty, either expressed or implied, is provided in relation to their accuracy, completeness or reliability. Expressions of opinion herein were arrived from careful considerations, which were based upon the best information known to us; and our opinion are believed to be fair and reasonable in the circumstances prevailing at the time. Any opinion expressed herein is subject to change without notice and may be different or contrary to opinions expressed by other business sectors as a result of using different assumptions and criteria. This document is distributed solely for information purpose and should not be construed as an offer or solicitation to buy or sell any securities or related financial instruments. Any analysis in this document is based on numerous assumptions, and past performance is not necessarily indicative of future results. SBS hereby does not promise that investors will obtain profits, nor will it share with investors any profits or liabilities for any investment activity taken by investors with regards to the contents presented herein. The use of any information, statements forecasts and projections contained herein will be at the sole discretion and risk of the users. The responsible analyst(s) of this report may interact with trading desk personnel, and sales personnel for the purpose of synthesizing and interpreting market data. SBS has in place necessary policies, procedures, and physical information barriers to control the flow of nonpublic materials from one area, division into another. SBS ensures confidential information will not be publicly disclosed without proper procedures, authorization. SBS and/or its officers, directors and employees may have a position in any security mentioned herein and may also perform or seek to perform investment banking services for these companies. No person is authorized to give any information or to make any representation not contained in this document. Any information or representation not contained in this document must not be relied upon as having been authorized by or on behalf of SBS.*